



## Streamside Suites

**Lease Square Footage:** 1,622sf

**Rent:** \$1723.38 p/mo. (\$12.75psf)

(+ \$14.38 psf NNN includes all utilities + janitorial)

**Broker commission:**

\$1.00 p/sf limited to 3 year max

## Available Immediately!

This space is perfect for a high-tech company, real estate firm, law firm, design agency, architecture firm, engineering firm, PR firm, etc. Suite 220 is a modern styled suite providing:

- Formal reception area
- Open work area with 4 work stations
- 4 private offices
- Conference room
- Built-in desks
- Kitchenette with abundant storage
- Excellent location in downtown Boulder (3 blocks from the Pearl Street Mall)

Along with a superb, creekside location The WHITEROCK BUILDING offers:

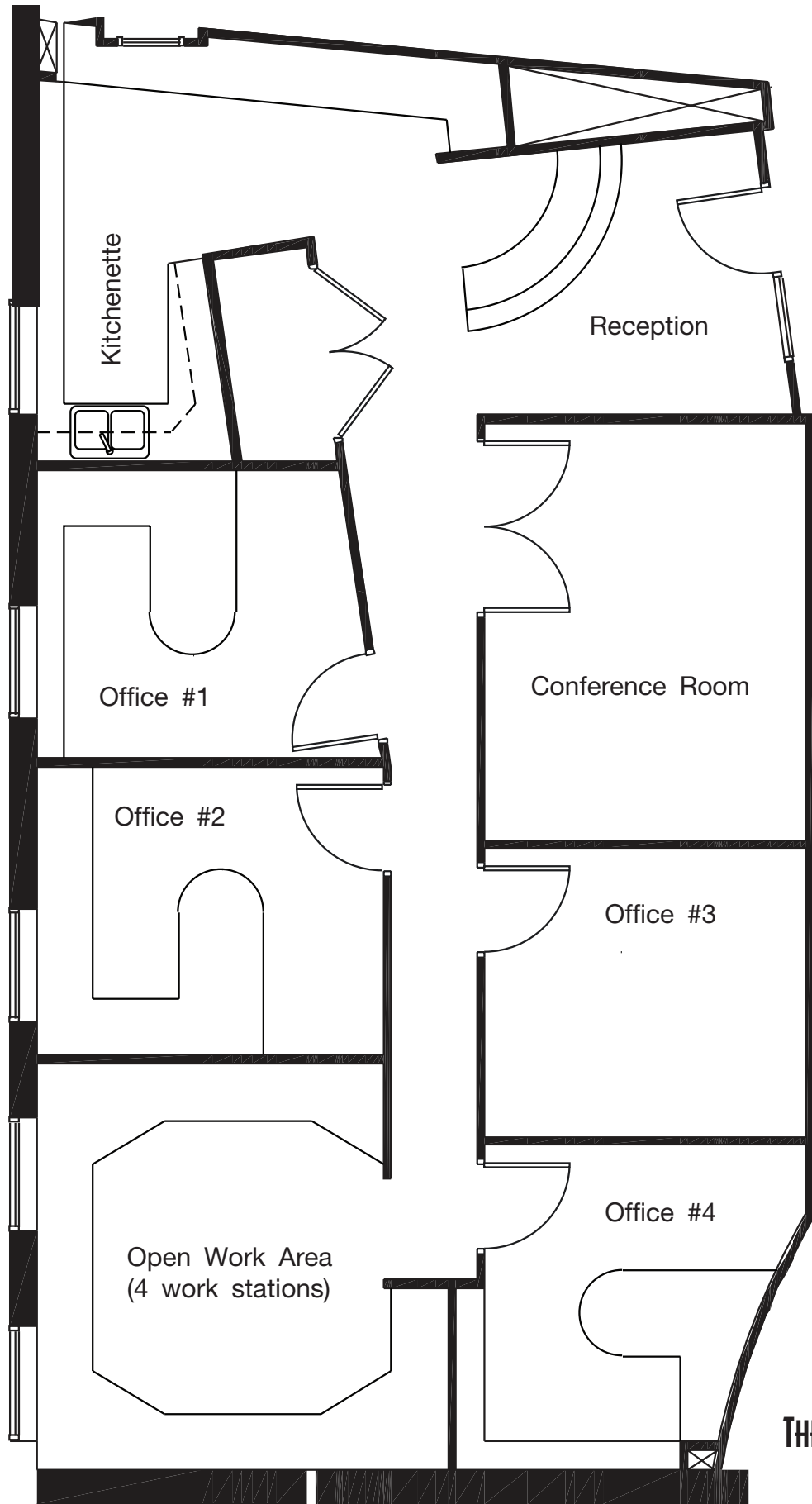
- Abundant street & bicycle parking
- City parking permits in lot one block away
- Onsite management
- Shower facilities
- Landscaped patio next to creek

1731 FIFTEENTH STREET  
BOULDER, CO 80302

(303) 442-4422 X 201

INFO@WHITEROCKBLDG.COM | WWW.WHITEROCKBLDG.COM





THE **WHITEROCK** BUILDING

SUITE 220